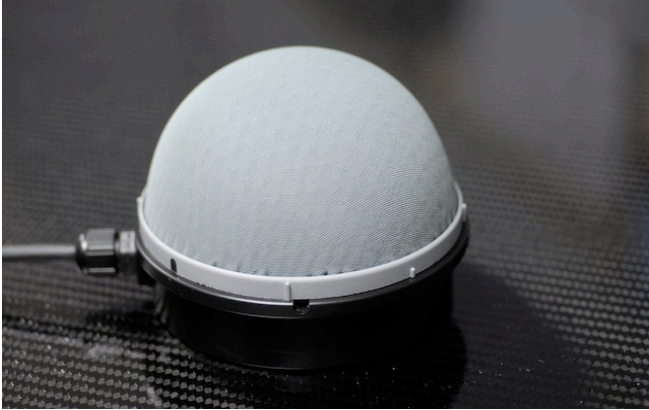


Waterproof Microphone

Designed for use in extreme conditions such as those found on a racing yacht.

OVERVIEW



Machined from a lightweight engineering plastic the body houses the internal preamp electronics, is very robust and impervious to salt water. A rubber suspension mechanism offers 20dB of isolation to the capsule assembly from structural born vibration.

Wind noise is dramatically reduced through a combination of a detachable Rycote windjammer and a 80Hz High Pass Filter (HPF) that is integrated into the pre-amp.

The internal pre-amp is accessible through the screw in base cap. By fitting a jumper the gain can be decreased by -6dB or increased by +6dB or +12dB. The electronics operates from a nominal 12VDC (9-18VDC) supply and presents a transformer isolated balanced output.

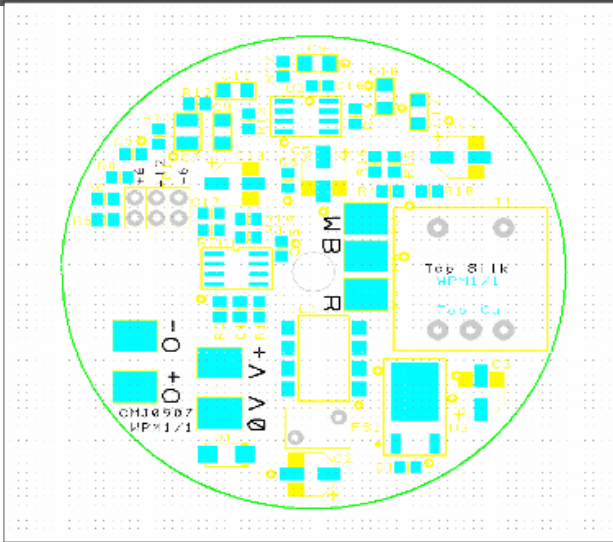
Designed for use with twisted pair cable, such as CAT5, a screw cable gland seals against the outer sheath and connections are made via solder pads on the pre-amp board.

TECHNICAL SPECIFICATIONS

Dimensions	110mm x 110mm
Weight	330g
Power supply	12v DC



WMPI PREAMP CONNECTION DETAILS



FUNCTION

PCB IDENT

FUNCTION	PCB IDENT
0V	0V
12V	V+
Balanced output (+)	O+
Balanced output (-)	O-

Connections are made by soldering directly to the large pads. Functions are shown in the table below:

A single jumper may be fitted to the header to adjust the gain -6dB, +6dB or +12dB.

